

NEXT GENERATION EU - DECRETO N. 79 DEL 30.04.2024 - MINISTERO DELL'ISTRUZIONE E DEL MERITO DI CONCERTO CON IL MINISTERO DELL'ECONOMIA E DELLE FINANZE - PNRR - MISSIONE 4- ISTRUZIONE E RICERCA-COMPONENTE 1- INVESTIMENTO 1.1 - PIANO PER ASILI NIDO E SCUOLE D'INFANZIA E SERVIZI DI EDUCAZIONE E CURA PER LA PRIMA INFANZIA FINANZIATO DALL'UNIONE EUROPEA. INTERVENTO DENOMINATO: "RICONVERSIONE CON DEMOLIZIONE E RICOSTRUZIONE DELL'EDIFICIO SITO IN VIA MADONNA DELLE GRAZIE."

CUP: H57G24000050006

**PROGETTO ESECUTIVO (Art. 41 e alleg. i.7 del D.Lgs. 36 / 2023)**

**Contenuto:** S5 - PROGETTO

Esecutivi TRAVI DI COPERTURA

**Tav. 33**

**Il Progettista e Coordinatore Sicurezza in fase di Progettazione**  
Ing. Giulio MAMBELLI

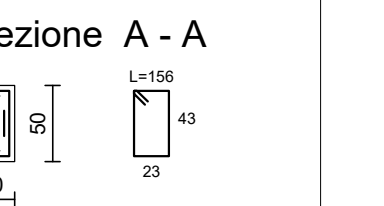
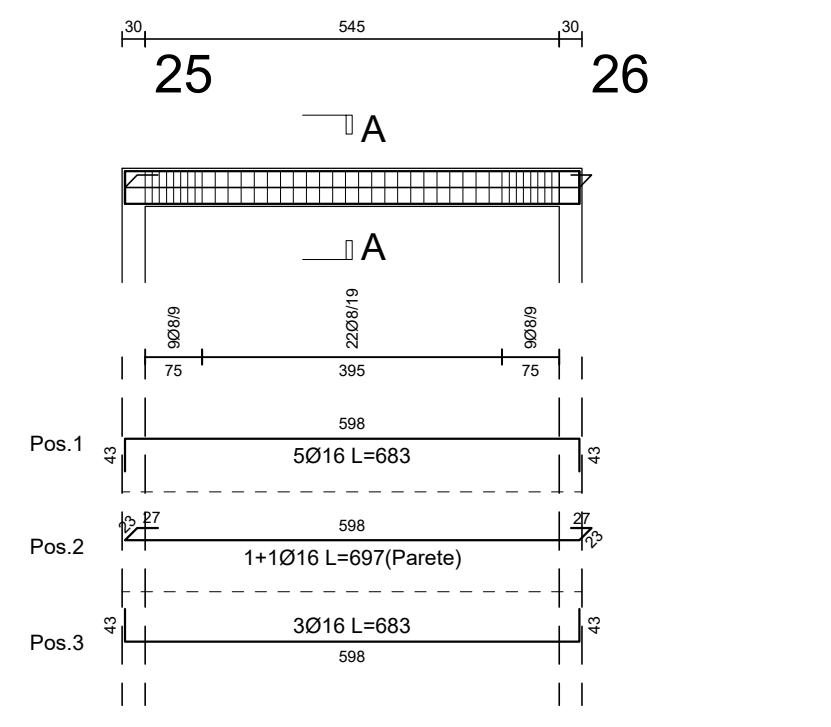
**Il R.U.P.**  
Ing. Claudio CAPPADONA

**Il Dirigente del 6° Settore**  
Dott. Domenico LOMBARDO

**L'Assessore ai LL.PP.**  
Ing. Santi ROMAGNOLO

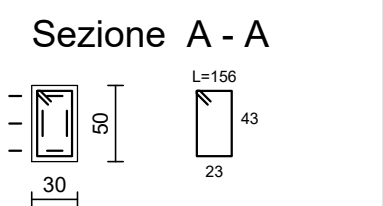
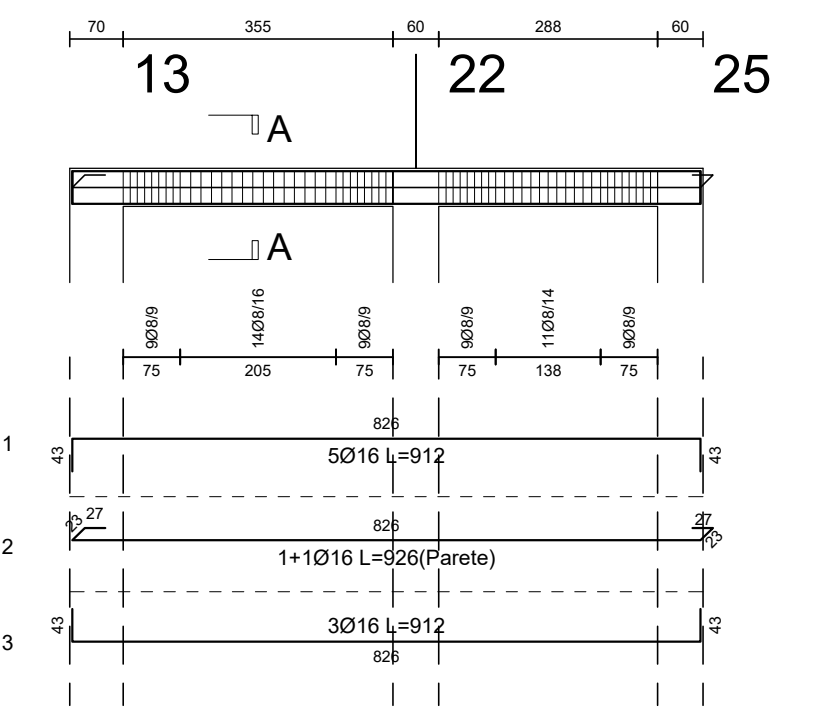
**Il Sindaco**  
Dott. Giuseppe MIDILI

Travata :201



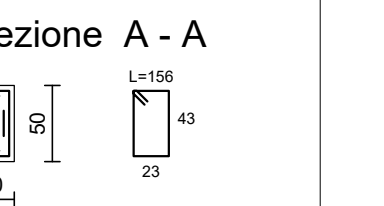
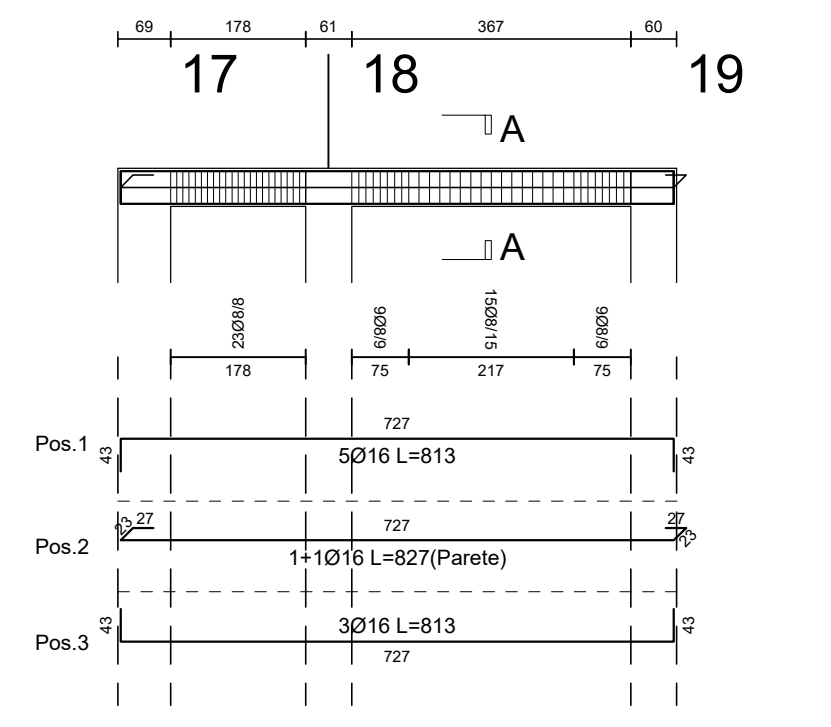
Cls C25/30  
Acciaio barre B450C  
Acciaio staffe B450C

Travata :203



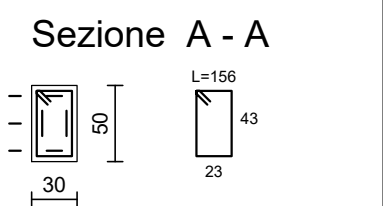
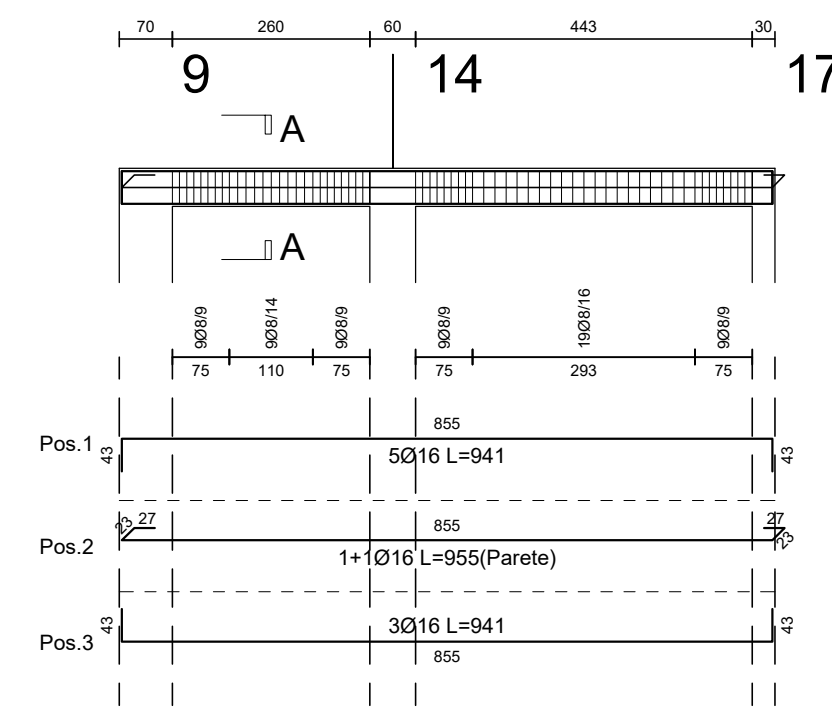
Cls C25/30  
Acciaio barre B450C  
Acciaio staffe B450C

Travata :206



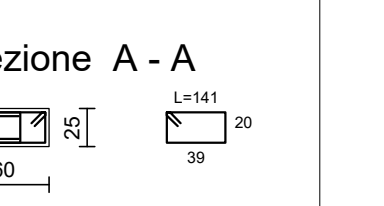
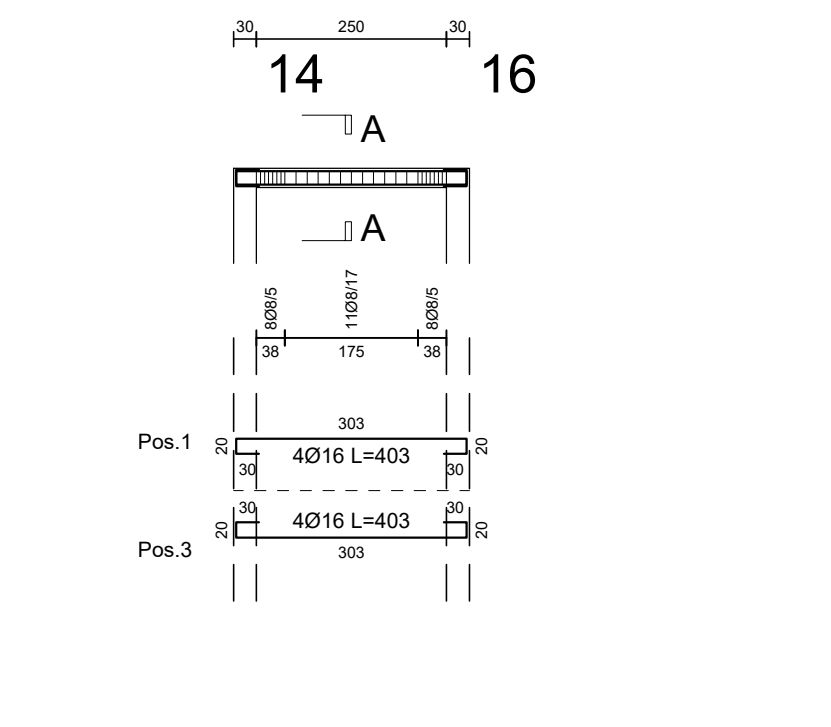
Cls C25/30  
Acciaio barre B450C  
Acciaio staffe B450C

Travata :208



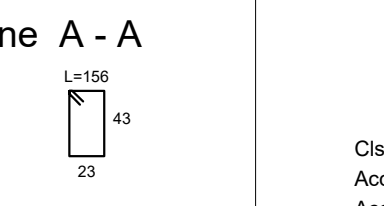
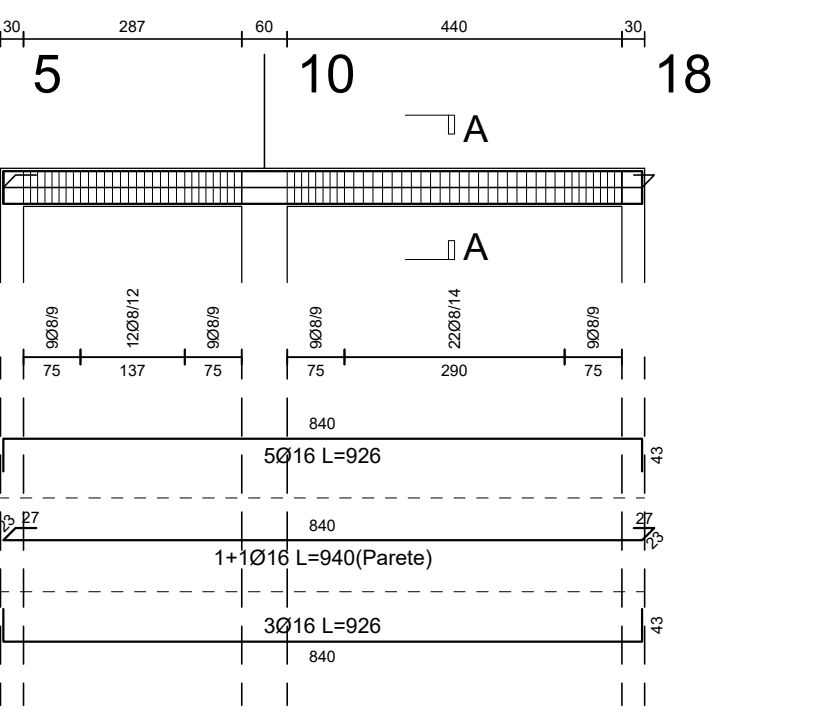
Cls C25/30  
Acciaio barre B450C  
Acciaio staffe B450C

Travata :210



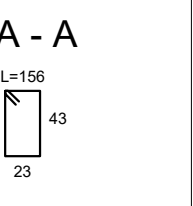
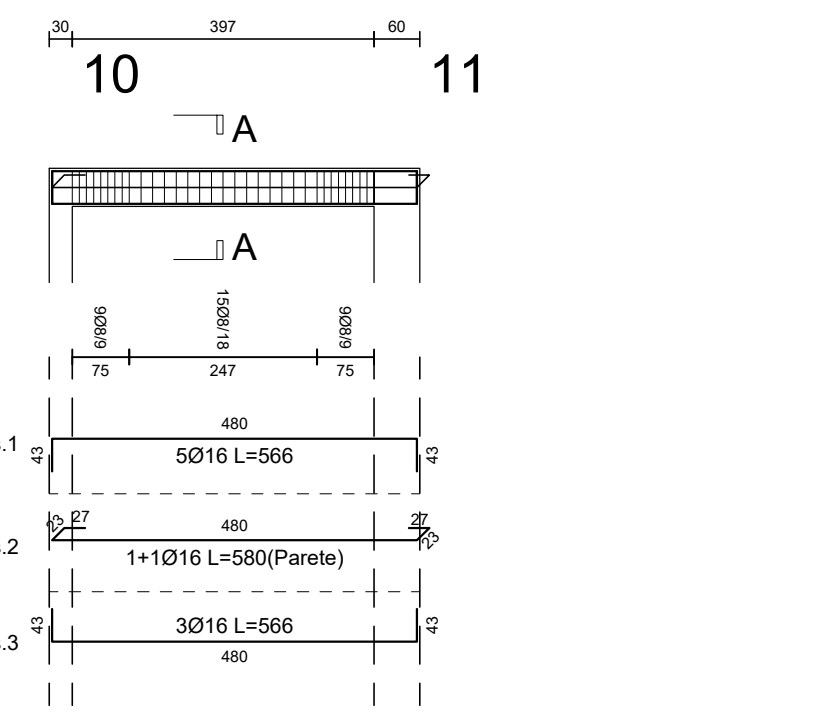
Cls C25/30  
Acciaio barre B450C  
Acciaio staffe B450C

Travata :212



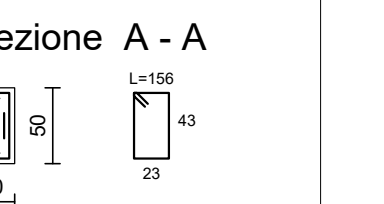
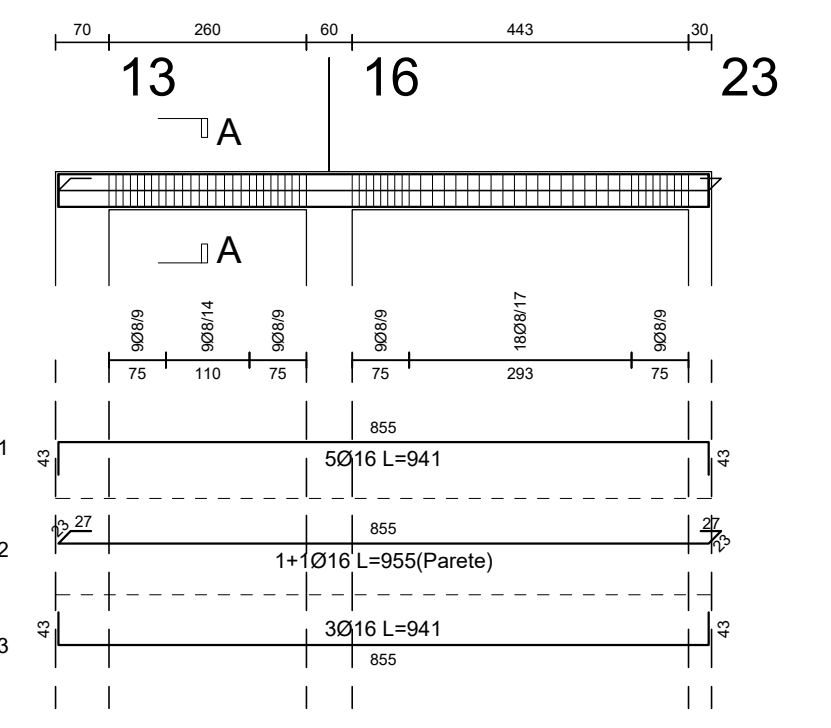
Cls C25/30  
Acciaio barre B450C  
Acciaio staffe B450C

Travata :214



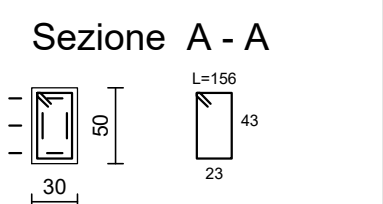
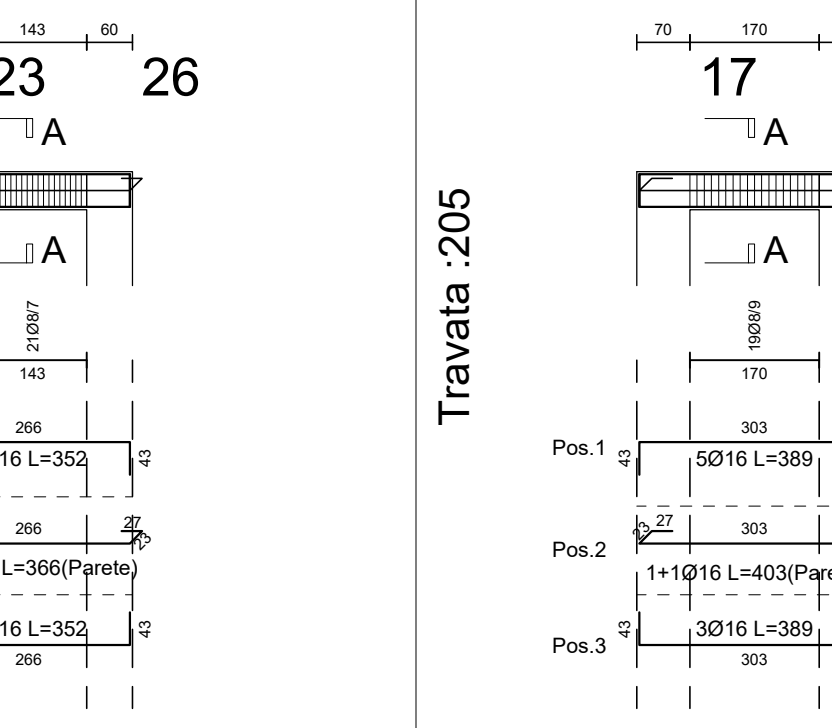
Cls C25/30  
Acciaio barre B450C  
Acciaio staffe B450C

Travata :202



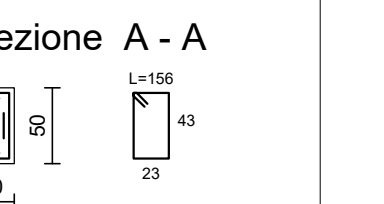
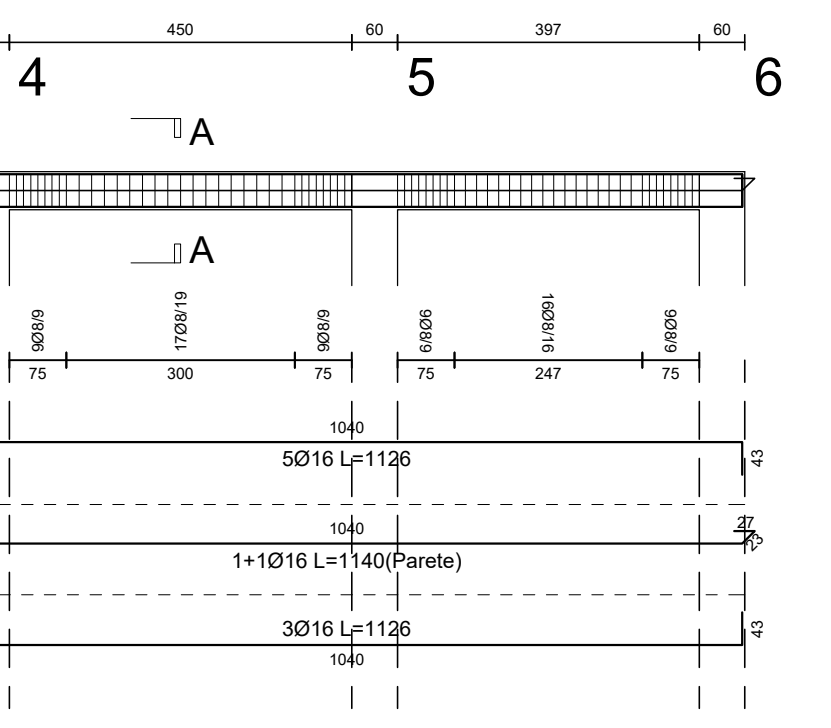
Cls C25/30  
Acciaio barre B450C  
Acciaio staffe B450C

Travata :204



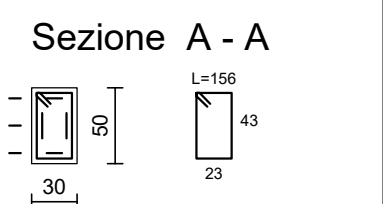
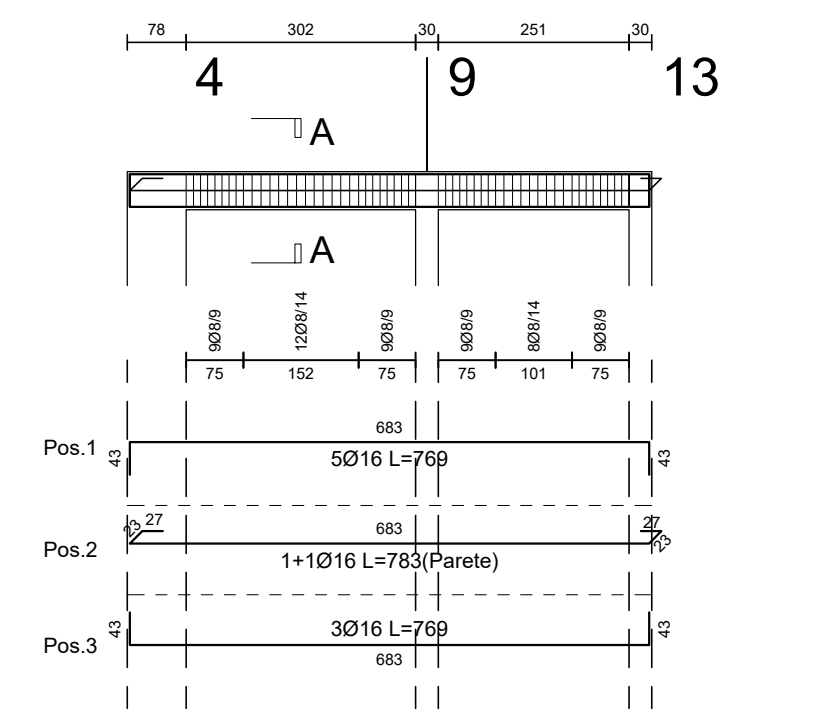
Cls C25/30  
Acciaio barre B450C  
Acciaio staffe B450C

Travata :205



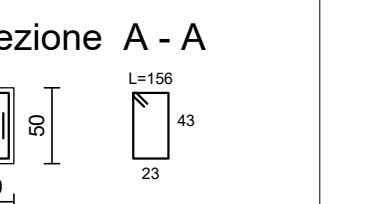
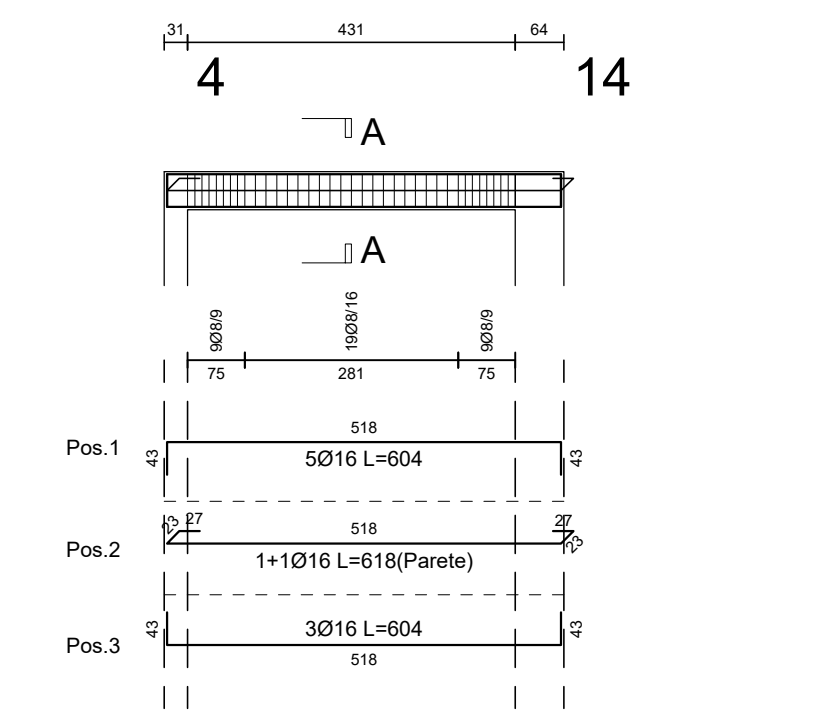
Cls C25/30  
Acciaio barre B450C  
Acciaio staffe B450C

Travata :209



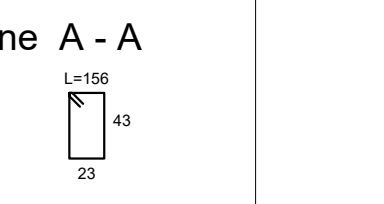
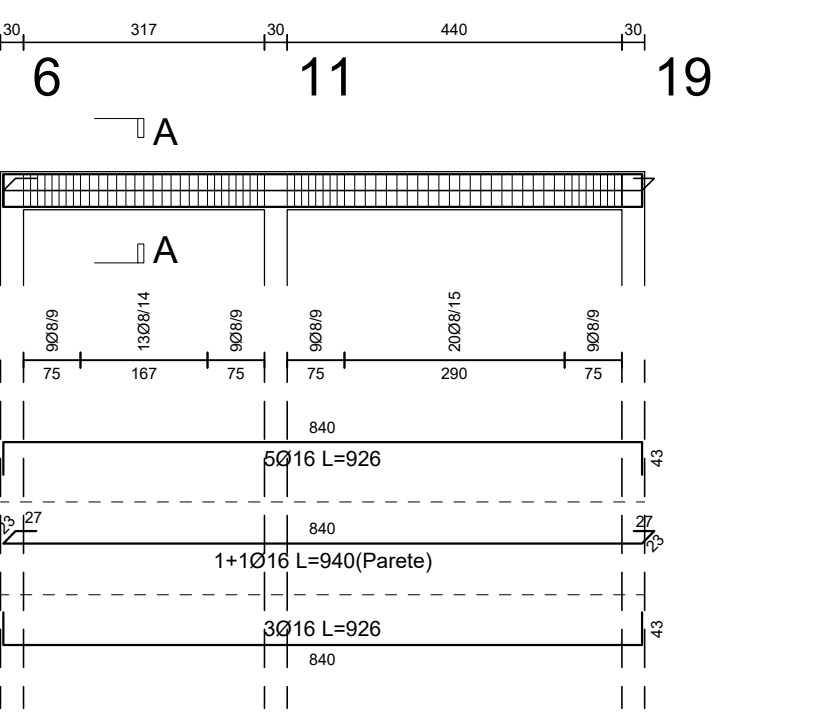
Cls C25/30  
Acciaio barre B450C  
Acciaio staffe B450C

Travata :211



Cls C25/30  
Acciaio barre B450C  
Acciaio staffe B450C

Travata :213



Cls C25/30  
Acciaio barre B450C  
Acciaio staffe B450C